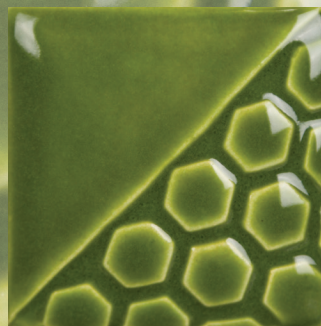




LOW-FIRE COMBO

EL160 Foliage Green

Cone 06



Technique was achieved by brushing on two (2) layers of base glaze (EL160 Foliage Green). Then apply two (2) layers of top glaze, letting glazes dry between coats.

	 <p>CG722 Seawind over EL160 Foliage Green</p>		 <p>CG753 Sassy Orange over EL160 Foliage Green</p>		 <p>CG962 Blue Azure over EL160 Foliage Green</p>
	 <p>CG963 Lemon Lime over EL160 Foliage Green</p>		 <p>CG964 Kaleidoscope over EL160 Foliage Green</p>		 <p>CG965 Mocha Marble over EL160 Foliage Green</p>
	 <p>CG981 Fruity Freckles over EL160 Foliage Green</p>		 <p>CG982 Mixed Melon over EL160 Foliage Green</p>		 <p>CG997 Seafoam over EL160 Foliage Green</p>

MB1556 Textured Bud Vases shown are fired to Cone 06.



MaycoColors.com

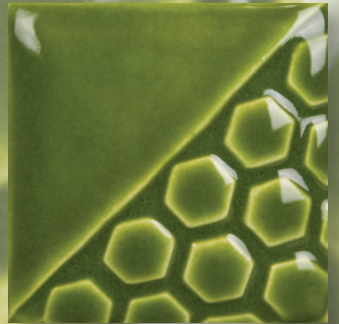




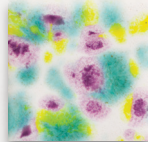
LOW-FIRE COMBO

EL160 Foliage Green

Cone 06



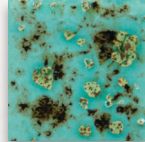
Technique was achieved by brushing on two (2) layers of base glaze (EL160 Foliage Green). Then apply two (2) layers of top glaze, letting glazes dry between coats.



CG999
Jazz Notes

over

EL160
Foliage Green



CG1008
Blue Guppy

over

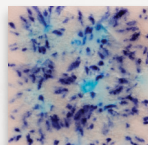
EL160
Foliage Green



EL140
Toasted Almond

over

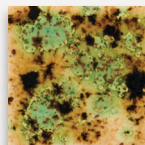
EL160
Foliage Green



S2702
Northern Lights

over

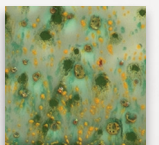
EL160
Foliage Green



S2709
Cappuccino Mint

over

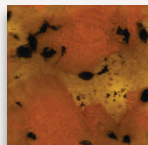
EL160
Foliage Green



S2714
Herb Garden

over

EL160
Foliage Green



S2725
Safari

over

EL160
Foliage Green



MB1556 Textured Bud Vases shown are fired to Cone 06.

MaycoColors.com

